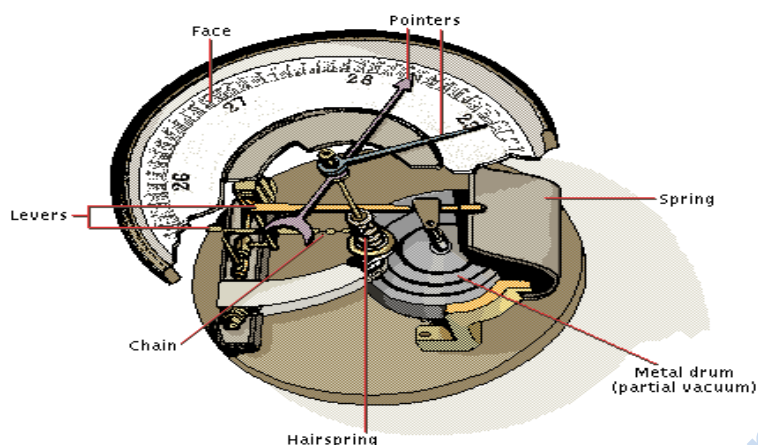


This chapter deals with

Atmospheric pressure, vertical variation pressure, horizontal distribution of pressure, world distribution of sea level pressure, factors affecting the velocity and direction of wind(pressure gradient force, frictional force, coriolis force, pressure and wind,) general circulation of the atmosphere, ENSO seasonal wind, local winds land and sea breezes mountain and valley winds, air masses , fronts, extratropical cyclone tropical cyclones, thunderstorms, tornadoes.



The weight of a column of air contained in a unit area from the mean sea level to the top of the atmosphere is called the **atmospheric pressure**. The atmospheric pressure is expressed in units of milibar. At sea level the average atmospheric pressure is 1,013.2 milibar. Due to gravity the air at the surface is denser and hence has higher pressure. Air pressure is measured with the help of a mercury barometer or the aneroid barometer.

The pressure decreases with height. At any elevation it varies from place to place and its variation is the primary cause of air motion, i.e. wind which moves from high pressure areas to low pressure areas.

Vertical Variation of Pressure

In the lower atmosphere the pressure decreases rapidly with height. The decrease amounts to about 1 mb for each 10 m increase in elevation. It does not always decrease at the same rate. Table 10.1 gives the average pressure and temperature at selected levels of elevation for a standard atmosphere.

Table 10.1 : Standard Pressure and Temperature at Selected Levels

Level	Pressure in mb	Temperature °C
Sea Level	1,013.25	15.2
1 km	898.76	8.7
5 km	540.48	-17.3
10 km	265.00	-49.7

Table 10.1 : Standard Pressure and Temperature at Selected Levels

The vertical pressure gradient force is much larger than that of the horizontal pressure gradient.

But, it is generally balanced by a nearly equal but opposite gravitational force. Hence, we do not experience strong upward winds.

Horizontal Distribution of Pressure

Small differences in pressure are highly

significant in terms of the wind direction and velocity.

Horizontal distribution of pressure is studied by drawing isobars at constant levels. **Isobars** are lines connecting places having equal pressure. In order to eliminate the effect of altitude on pressure, it is measured at any station after being reduced to sea level for purposes of comparison.

World Distribution of Sea Level Pressure

The world distribution of sea level pressure in January and July has been shown in Figures 10.2 and 10.3. Near the equator the sea level pressure is low and the area is known as **equatorial low**.

Along 30° N and 30° S found the high-pressure areas known as the **subtropical highs**.

Further pole wards along 60° N and 60° S, the low-pressure belts are termed as the **sub polar lows**.

Near the poles the pressure is high and it is known as the **polar high**.

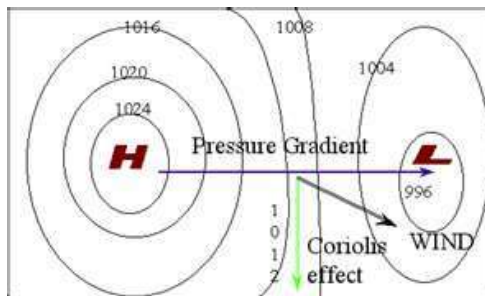
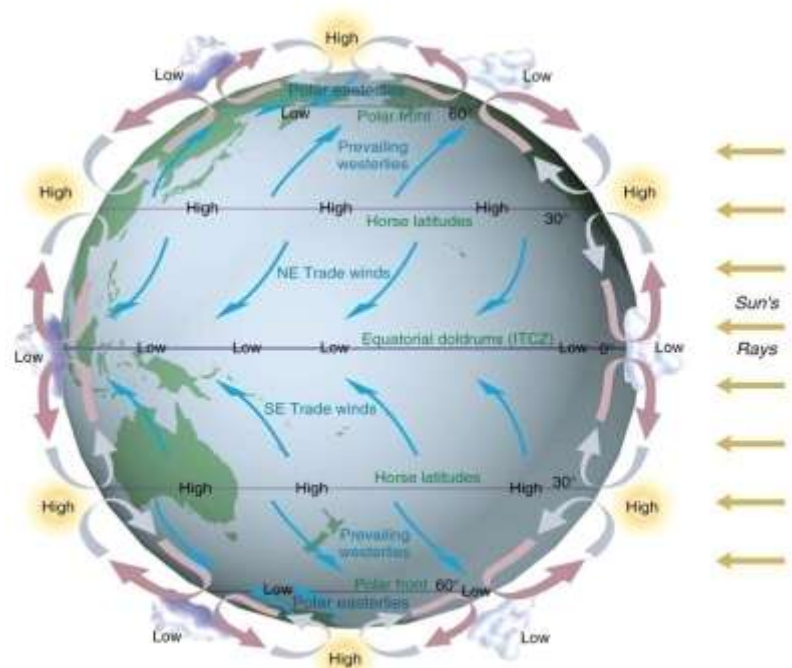
These pressure belts are not permanent in nature. They oscillate with the apparent movement of the sun. In the northern hemisphere in winter they move southwards and in the summer northwards.

Forces Affecting the Velocity and Direction of Wind

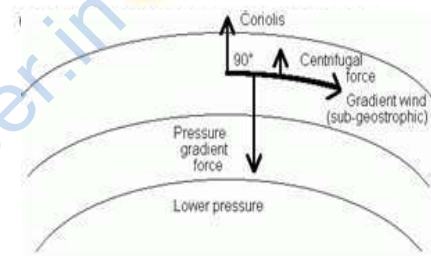
You already know that the air is set in motion due to the differences in atmospheric pressure.

The air in motion is called wind. The wind blows from high pressure to low pressure. In addition, rotation of the earth also affects the wind movement. The force exerted by the rotation of the earth is known as the Coriolis force.

The horizontal winds near the earth surface respond to the combined effect of three forces - the pressure gradient force, the frictional force and the Coriolis force. In addition, the gravitational force acts downward.



Pressure Gradient Force



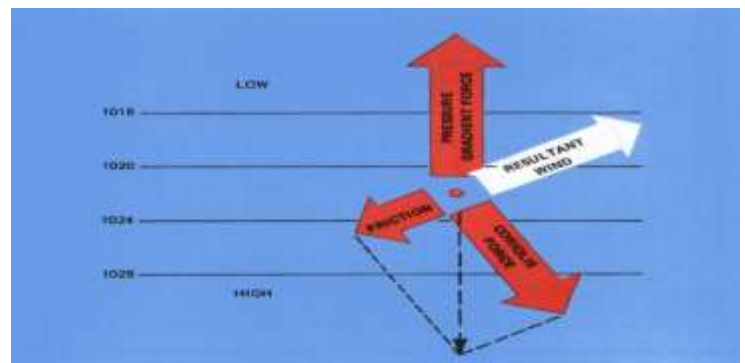
The differences in atmospheric pressure produces a force. The rate of change of pressure with respect to distance is the pressure gradient. The pressure gradient is strong where the isobars are close to each other and is weak where the isobars are apart.

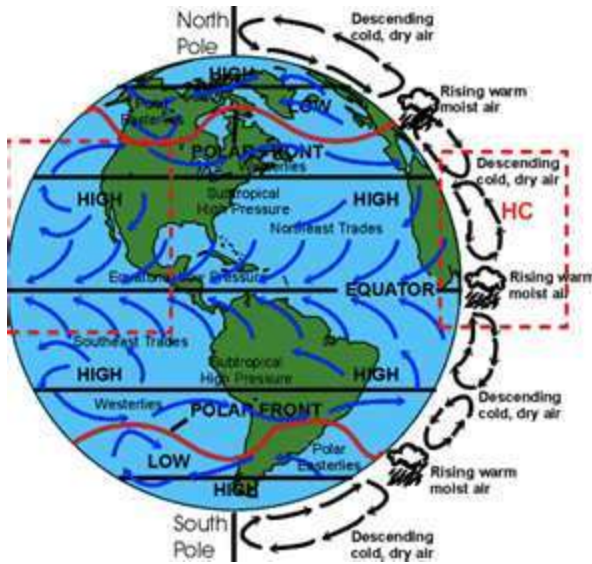


The rotation of the earth about its axis affects the direction of the wind. This force is called the Coriolis force after the French physicist who described it in 1844. It deflects the wind to the right direction in the northern hemisphere and to the left in the southern hemisphere. The deflection is more when the wind velocity is high. The Coriolis force is directly proportional to the angle of latitude. It is maximum at the poles and is absent at the equator. The Coriolis force acts perpendicular to the

- It affects the speed of the wind. It is greatest at the surface and its influence generally extends up to an elevation of 1 - 3 km. Over the sea surface the friction is minimal.

Coriolis Force

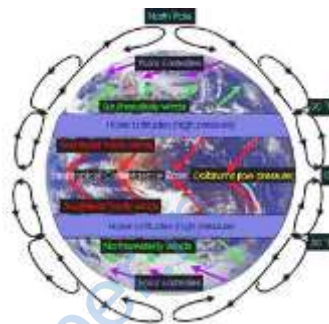




pressure gradient force. The pressure gradient force is perpendicular to an isobar. The higher the pressure gradient force, the more is the velocity of the wind and the larger is the deflection in the direction of wind. As a result of these two forces operating perpendicular to each other, in the low-pressure areas the wind blows around it. At the equator, the Coriolis force is zero and the wind blows perpendicular to the isobars. The low pressure gets filled instead of getting intensified. That is the reason why tropical cyclones are not formed near the equator.

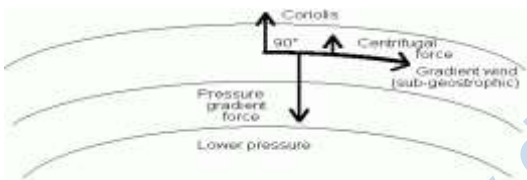
are the net result of the wind generating the upper atmosphere, 2 - 3 km above the from frictional effect of the surface and are the pressure gradient and the Coriolis force. straight and when there is no friction, the pressure gradient force is Coriolis force and the resultant wind blows This wind is known as the geostrophic wind .

Pressure and Wind



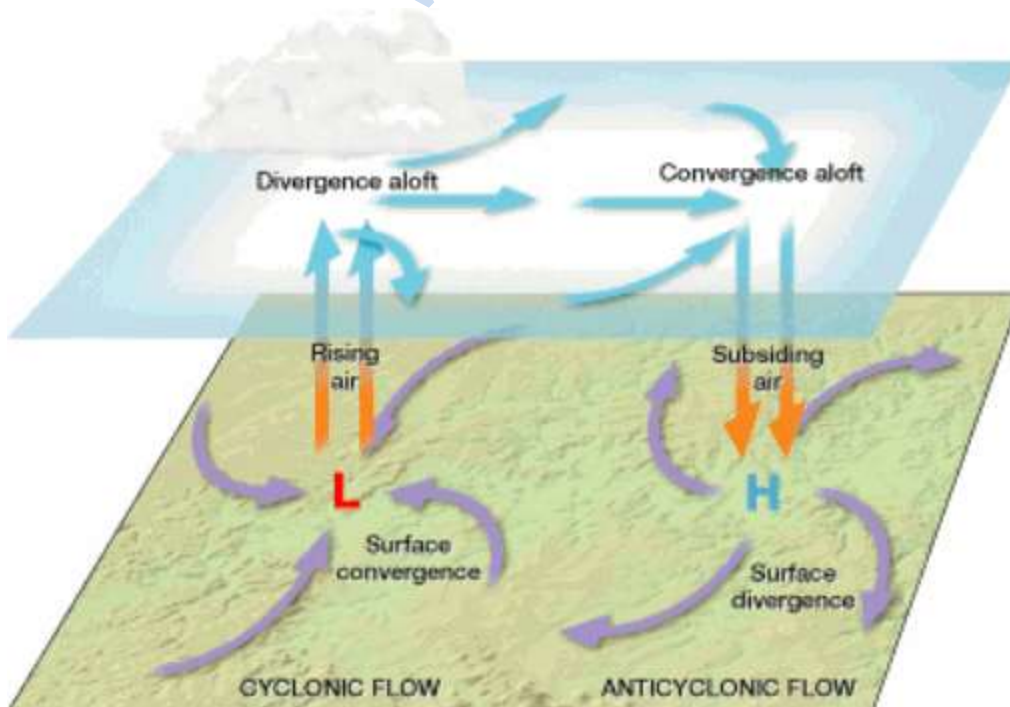
The velocity and direction of the wind forces. The winds in surface, are free controlled mainly by When isobars are balanced by the parallel to the isobar.

• Figure 10.4 : Geostrophic Wind



The wind circulation around a low is called **cyclonic circulation**. Around a high it is called **anti cyclonic circulation**.

The direction of winds around such systems changes according to their location in

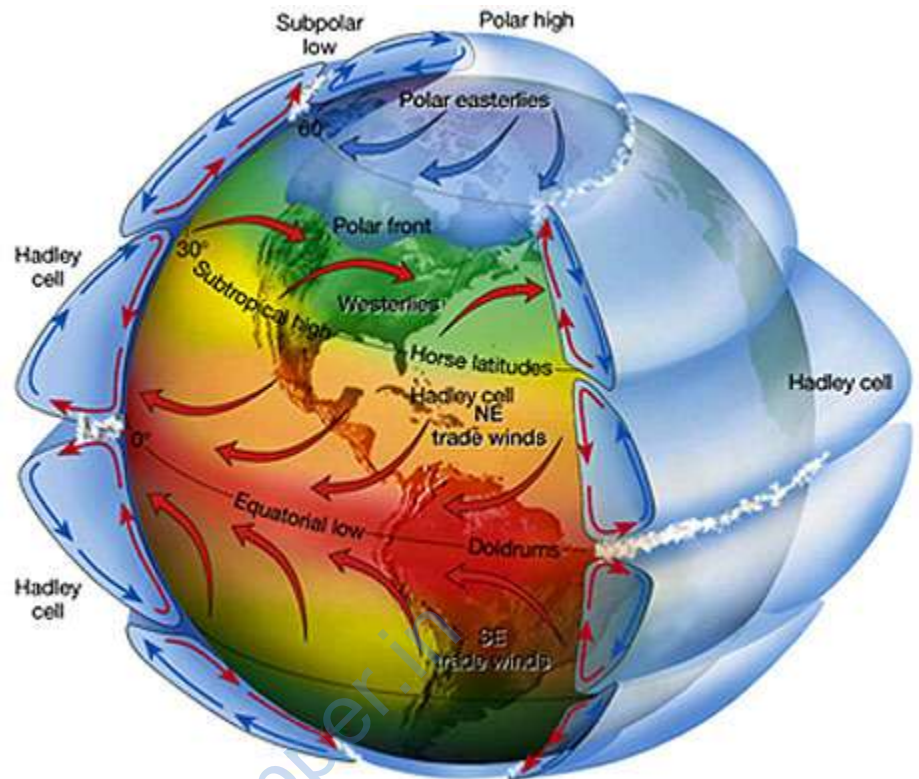


different hemispheres (Table 10.2). The wind circulation at the earth's surface closely related to the wind circulation at higher level. Generally, over low pressure area the air will converge and rise. Over high pressure area the air will subside from above and diverge at the surface (part from convergence, some eddies, convection currents, orographic uplift and uplift along fronts cause the rising of air, which is essential for the formation of clouds and precipitation.

Dennis Tasa

General circulation of the atmosphere

The pattern of planetary winds largely depends on : (i) latitudinal variation of atmospheric heating; (ii) emergence of pressure belts; (iii) the migration of belts following apparent path of the sun; (iv) the distribution of continents and oceans; (v) the rotation of earth. The pattern of the movement of the planetary winds is called the general circulation of the atmosphere. The general circulation of the atmosphere also sets in motion the ocean water circulation which influences the earth's climate.



A schematic description of the general circulation is shown in Figure 10.6. The air at the Inter Tropical Convergence Zone (ITCZ) rises because of convection caused by high insolation and a low pressure is created.

The winds from the tropics converge at this low pressure zone.

The converged air rises along with the convective cell.

It reaches the top of the troposphere up to an altitude of 14 km. and moves towards the poles. This causes accumulation of air at about 30° N and S.

Part of the accumulated air sinks to the ground and forms a subtropical high. Another reason for sinking is the cooling of air when it reaches 30° N and S latitudes.

Down below near the land surface the air flows towards the equator as the easterlies.

The easterlies from either side of the equator converge in the Inter Tropical Convergence Zone (ITCZ).

Such circulations from the surface upwards and *vice-versa* are called cells.

Such a cell in the tropics is called **Hadley Cell**.

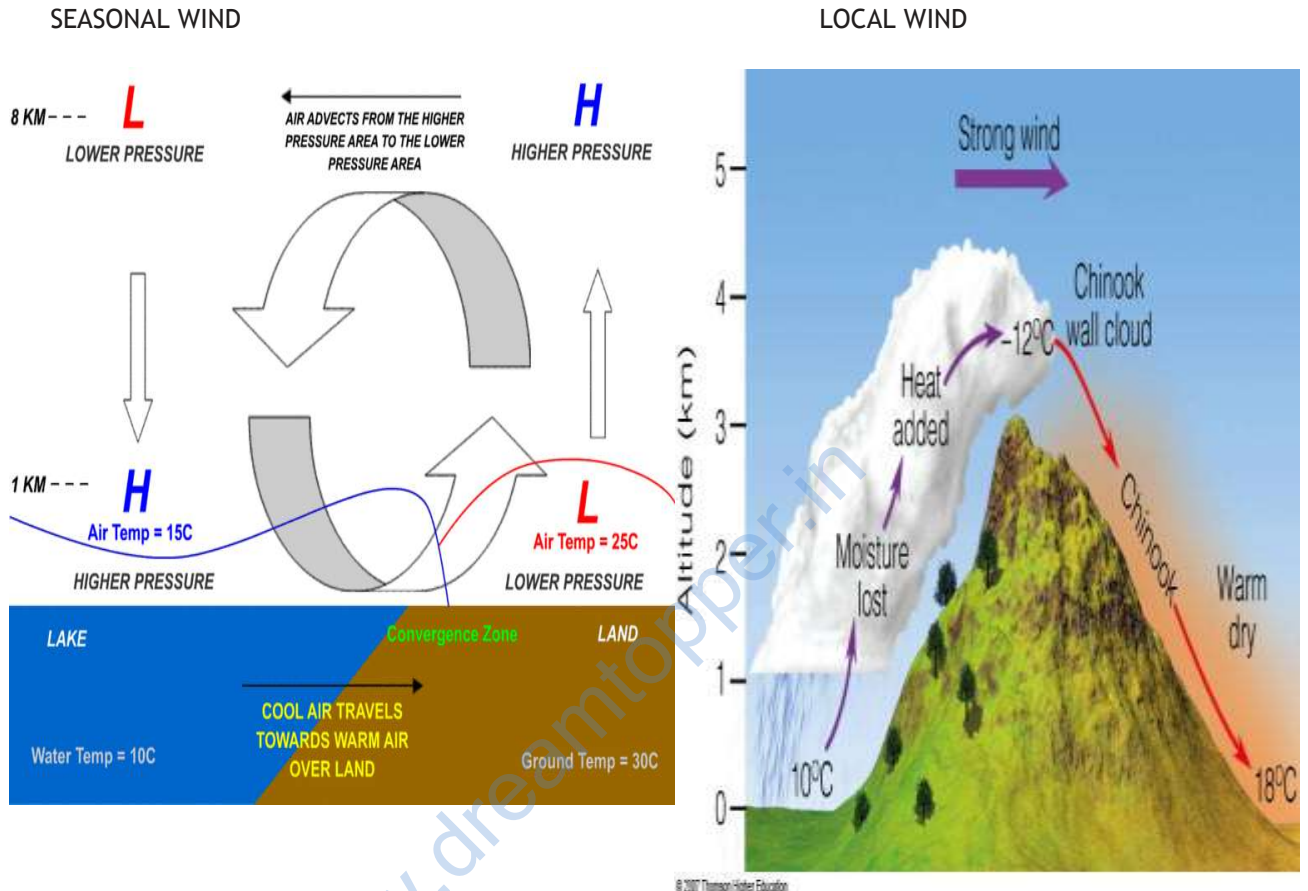
In the middle latitudes the circulation is that of sinking cold air that comes from the poles and the rising warm air that blows from the subtropical high. At the surface these winds are called westerlies and the cell is known as the **Ferrel cell**. At polar latitudes the cold dense air subsides near the poles and blows towards middle latitudes as the polar easterlies. This cell is called the **polar cell**.

General Atmospheric Circulation and its Effects on Oceans

Warming and cooling of the Pacific Ocean is most important in terms of general atmospheric circulation. The warm water of the central Pacific Ocean slowly drifts towards South American coast and replaces the cool Peruvian current. Such appearance of warm water off the coast of Peru is known as the El Nino. The El Nino event is closely associated with the pressure changes in the Central Pacific and Australia. This change in pressure condition over Pacific is known as the southern oscillation. The combined phenomenon of southern oscillation and El Nino is known as ENSO. In the years when the ENSO is strong, large-scale variations in weather occur over the world. The arid west coast of South America receives heavy rainfall, drought occurs in Australia and sometimes in India and floods in China. This phenomenon is closely monitored and is used for long range forecasting in major parts of the world.

- **Seasonal Wind**

The pattern of wind circulation is modified in different seasons due to the shifting of regions of maximum heating, pressure and wind belts. The most pronounced effect of such a shift is noticed in the monsoons, especially over southeast Asia.

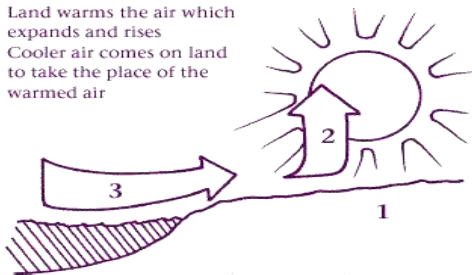


The other local deviations from the general circulation system are as follows.

- **Local Winds**

Differences in the heating and cooling of earth surfaces and the cycles those develop daily or annually can create several common, local or regional winds.

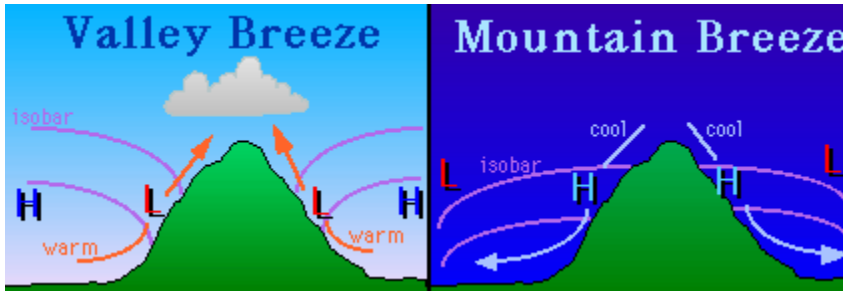
1. Sun warms the land
2. Land warms the air which expands and rises
3. Cooler air comes on land to take the place of the warmed air



Land and Sea Breezes

As explained earlier, the land and sea absorb and transfer heat differently. During the day the land heats up faster and becomes warmer than the sea. Therefore, over the land the air rises giving rise to a low pressure area, whereas the sea is relatively cool and the pressure over sea is relatively high. Thus, pressure gradient from sea to land is created and the wind blows from the sea to the land as the sea breeze. In the night the reversal of condition takes place. The land loses heat faster and is cooler than the sea. The pressure gradient is from the land to the sea and hence land breeze results (Figure 10.7).

Figure 10.7 : Land and sea breezes

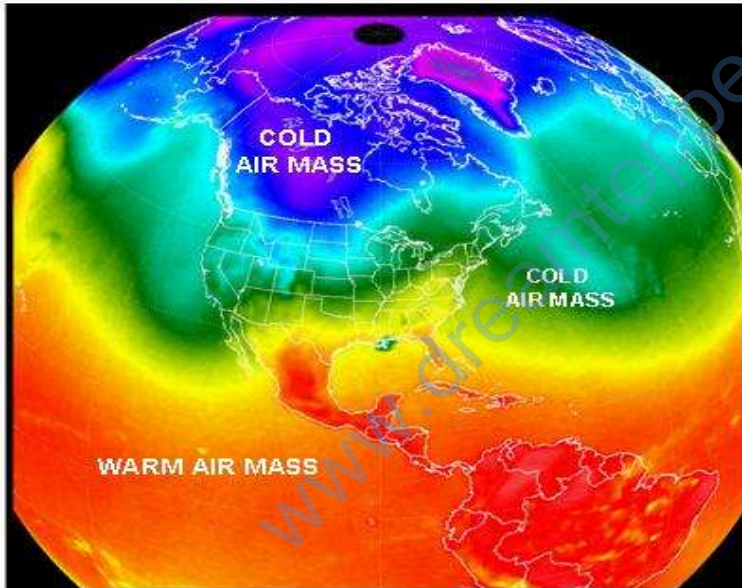


Mountain and Valley Winds

In mountainous regions, during the day the slopes get heated up and air moves upslope and to fill the resulting gap the air from the valley blows up the valley. This wind is known as the valley breeze. During the night the slopes get cooled and the dense air descends into the valley as the mountain wind. The cool air, of the high plateaus and ice fields draining into the valley is called katabatic wind. Another

type of warm wind occurs on the leeward side of the mountain ranges. The moisture in these winds, while crossing the mountain ranges condense and precipitate. When it descends down the leeward side of the slope the dry air gets warmed up by adiabatic process. This dry air may melt the snow in a short time.

Air mass



When the air remains over a homogenous area for a sufficiently longer time, it acquires the characteristics of the area. The homogenous regions can be the vast ocean surface or vast plains. The air with distinctive characteristics in terms of temperature and humidity is called an **air mass**.

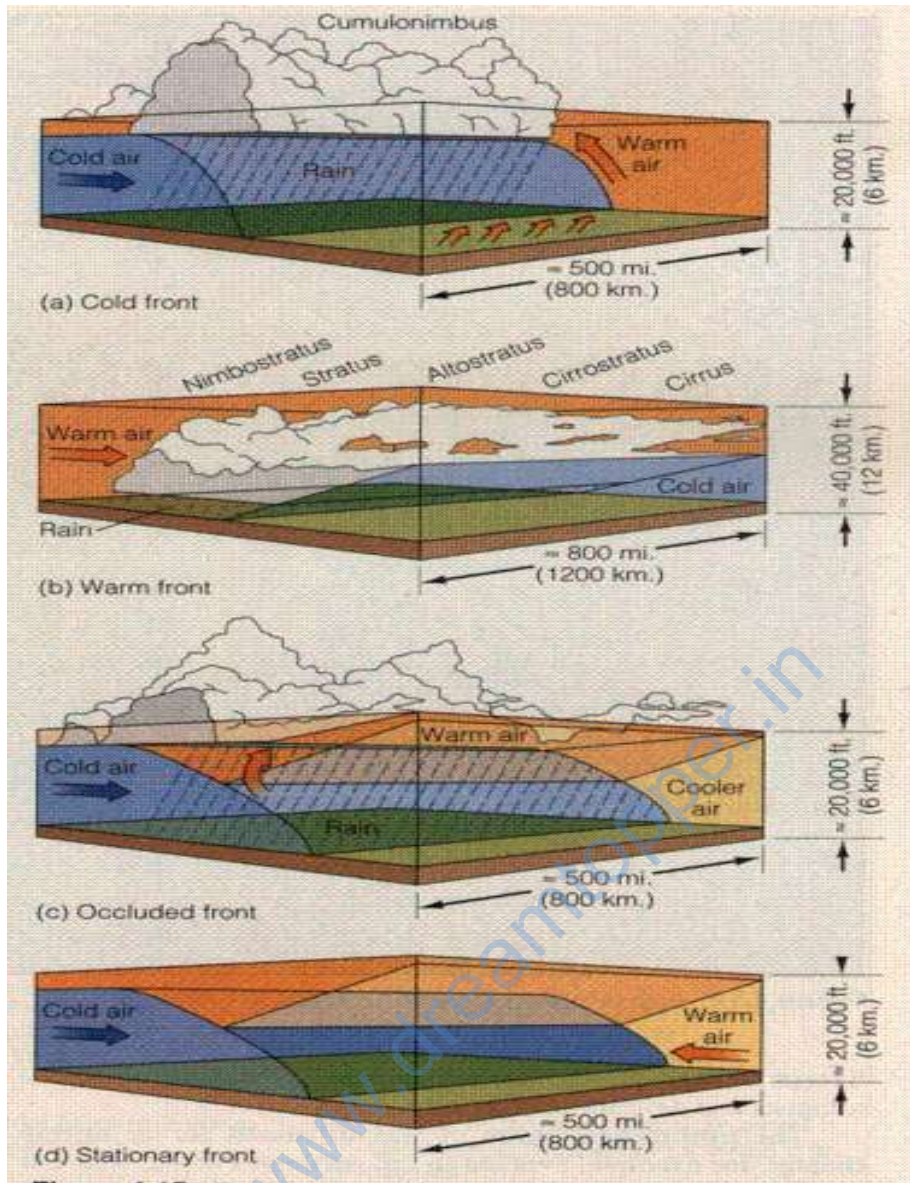
It is defined as a large body of air having little horizontal variation in temperature and moisture. The homogenous surfaces, over which air masses form, are called the source regions.

The air masses are classified according to the source regions. There are five major source regions. These are:

- (i) Warm tropical and subtropical oceans;
- (ii) The subtropical hot deserts;
- (iii) The relatively cold high latitude oceans;
- (iv) The very cold snow covered continents in high latitudes;
- (v) Permanently ice covered continents in the Arctic and Antarctica. Accordingly,

following **types of air masses are recognised:**

- (i) Maritime tropical (mT);
- (ii) Continental tropical (cT);
- (iii) Maritime polar (mP);
- (iv) Continental polar (cP);
- (iv) Continental arctic (cA).
- (v) Tropical air masses are warm and polar air masses are cold.



Fronts

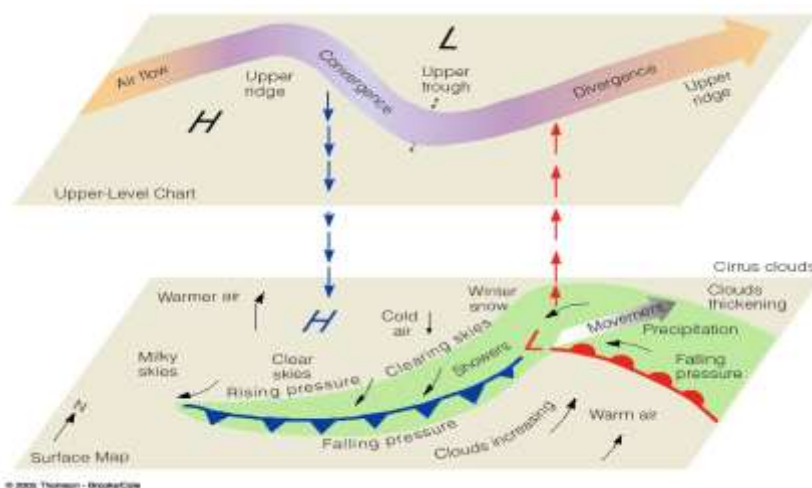
When two different air masses meet, the boundary zone between them is called a **front**.

The process of formation of the fronts is known as **frontogenesis**. There are four types of fronts:

- (a) Cold;
- (b) Warm;
- (c) Stationary;
- (d) Occluded.

When the front remains stationary, it is called a **stationary front**.

When the cold air moves towards the warm air mass, its contact zone is called the **cold front**, whereas if the warm air mass moves towards the cold air mass, the contact zone is a warm front. If an air mass is fully lifted above the land surface, it is called the **occluded front**.



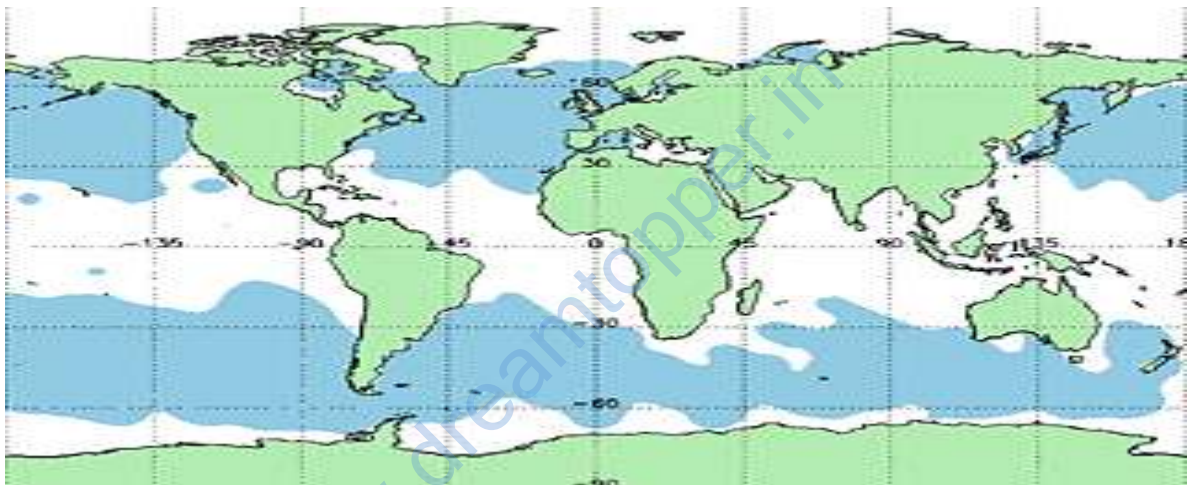
The fronts occur in middle latitudes and are characterized by steep gradient in temperature and pressure. They bring abrupt changes in temperature and cause the air to rise to form clouds and cause precipitation.

Extra Tropical Cyclones



The systems developing in the mid and high latitude, beyond the tropics are called the *middle latitude or extra tropical cyclones*.

- location of temperate cyclones



The passage of front causes abrupt changes in the weather conditions over the area in the middle and high latitudes. Extra tropical cyclones form along the polar front. Initially, the front is stationary. In the northern hemisphere, warm air blows from the south and cold air from the north of the front. When the pressure drops along the front, the warm air moves northwards and the cold air move towards, south setting in motion an anticlockwise cyclonic circulation. The cyclonic circulation leads to a well developed extra tropical cyclone, with a warm front and a cold front.

Tropical Cyclones

Tropical cyclones are violent storms that originate over oceans in tropical areas and large scale destruction caused by violent winds, very heavy rainfall and storm surges. This is one of the most devastating natural calamities. They are known as **Cyclones** in the Indian Ocean, **Hurricanes** in the Atlantic, **Typhoons** in the Western Pacific and South China Sea, and **Willy-willies** in the Western Australia.

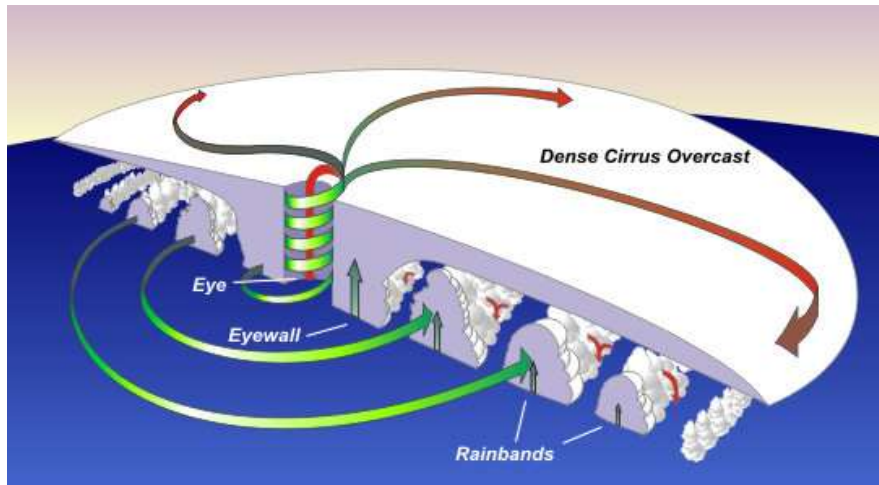
Tropical cyclones originate and intensify over warm tropical oceans.

The conditions favourable for the formation and intensification of tropical storms are:

- (i) Large sea surface with temperature higher than 27°C ;
- (ii) Presence of the Coriolis force;
- (iii) Small variations in the vertical wind speed;
- (iv) A pre-existing weak low-pressure area or low-level-cyclonic circulation;
- (v) Upper divergence above the sea level system.

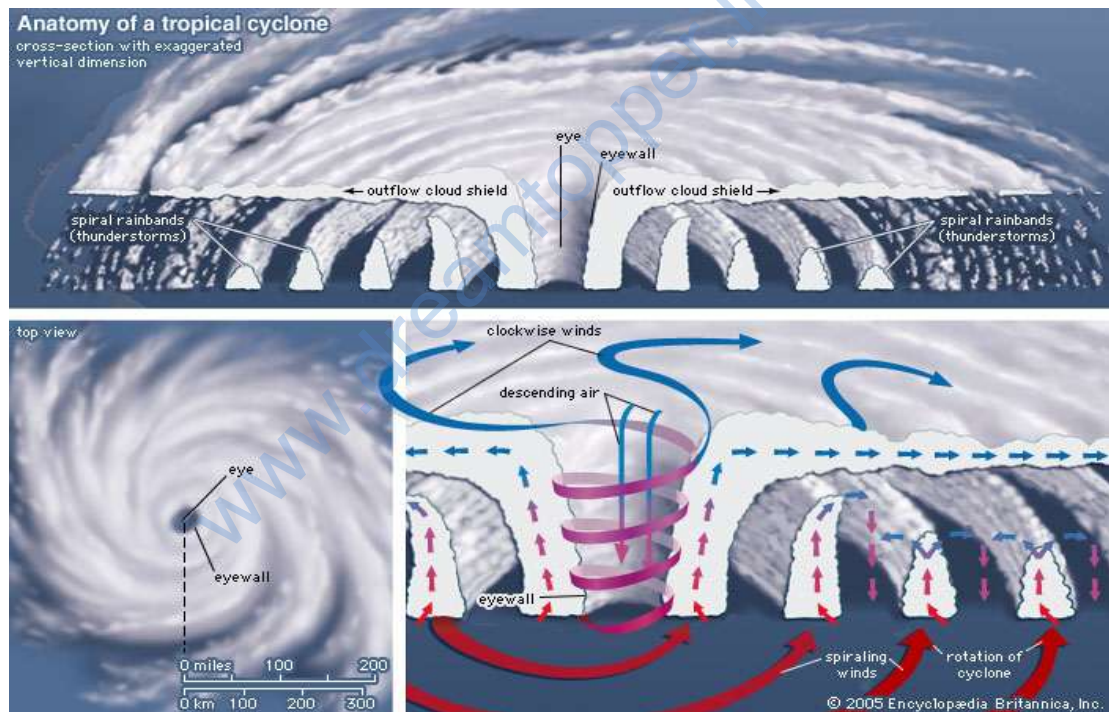
The energy that intensifies the storm, comes from the condensation process in the towering cumulonimbus clouds, surrounding the centre of the storm. With continuous supply of moisture from the sea, the storm is further strengthened. On reaching the land the moisture supply is cut off and the storm dissipates. The place where a tropical cyclone crosses the coast is called the landfall of the cyclone. The cyclones, which cross 20°N latitude generally, reserve and they are more

destructive. A schematic representation of the vertical structure of a mature tropical cyclonic storm is shown in Figure given below



Physical Structure of Tropical Cyclone

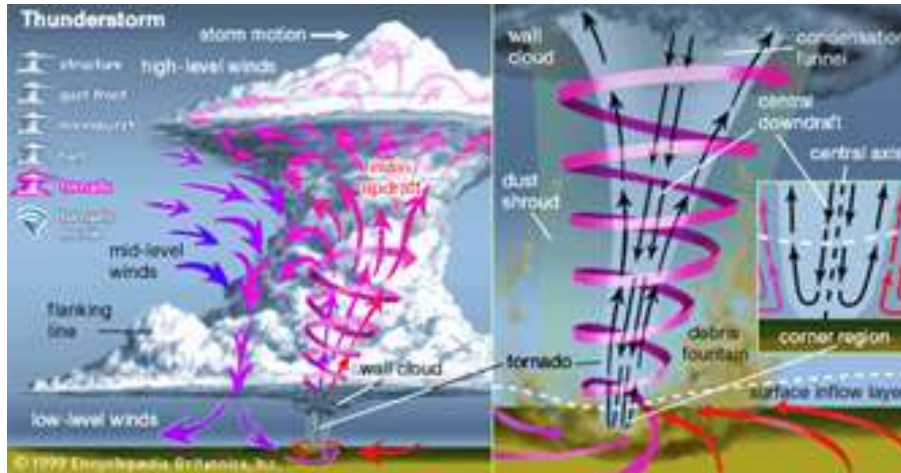
To best understand the structure of tropical cyclones, you may find useful to briefly review the concept of thermal wind and vorticity



Structure of a tropical cyclone. (Source: Britannica)

A mature tropical cyclone is characterized by the strong spirally circulating wind around the centre, called the eye. The diameter of the circulating system can vary between 150 and 250 km. The eye is a region of calm with subsiding air. Around the eye is the eye wall, where there is a strong spiraling ascent of air to greater height reaching the tropopause. The wind reaches maximum velocity in this region, reaching as high as 250 km per hour. Torrential rain occurs here. From the eye wall rain bands may radiate and trains of cumulus and cumulonimbus clouds may drift into the outer region. The diameter of the storm over the Bay of Bengal, Arabian sea and Indian ocean is between 600 - 1200 km. The system moves slowly about 300 - 500 km per day. The cyclone creates storm surges and they inundate the coastal low lands. The storm peters out on the land.

- **Thunderstorms and Tornadoes**



Other severe local storms are **thunderstorms and tornadoes**. They are of short duration, occurring over a small area but are violent. **Thunderstorms** are caused by intense convection on moist hot days.

From severe thunderstorms sometimes spiralling wind descends like a trunk of an elephant with great force, with very low pressure at the centre, causing massive destruction on its way. Such a phenomenon is called a **tornado**. Tornadoes generally occur in middle latitudes. The tornado over the sea is called **water sprouts**.



These violent storms are the manifestation of the atmosphere's adjustments to varying energy distribution. The potential and heat energies are converted into kinetic energy in these storms and the restless atmosphere again returns to its stable state.